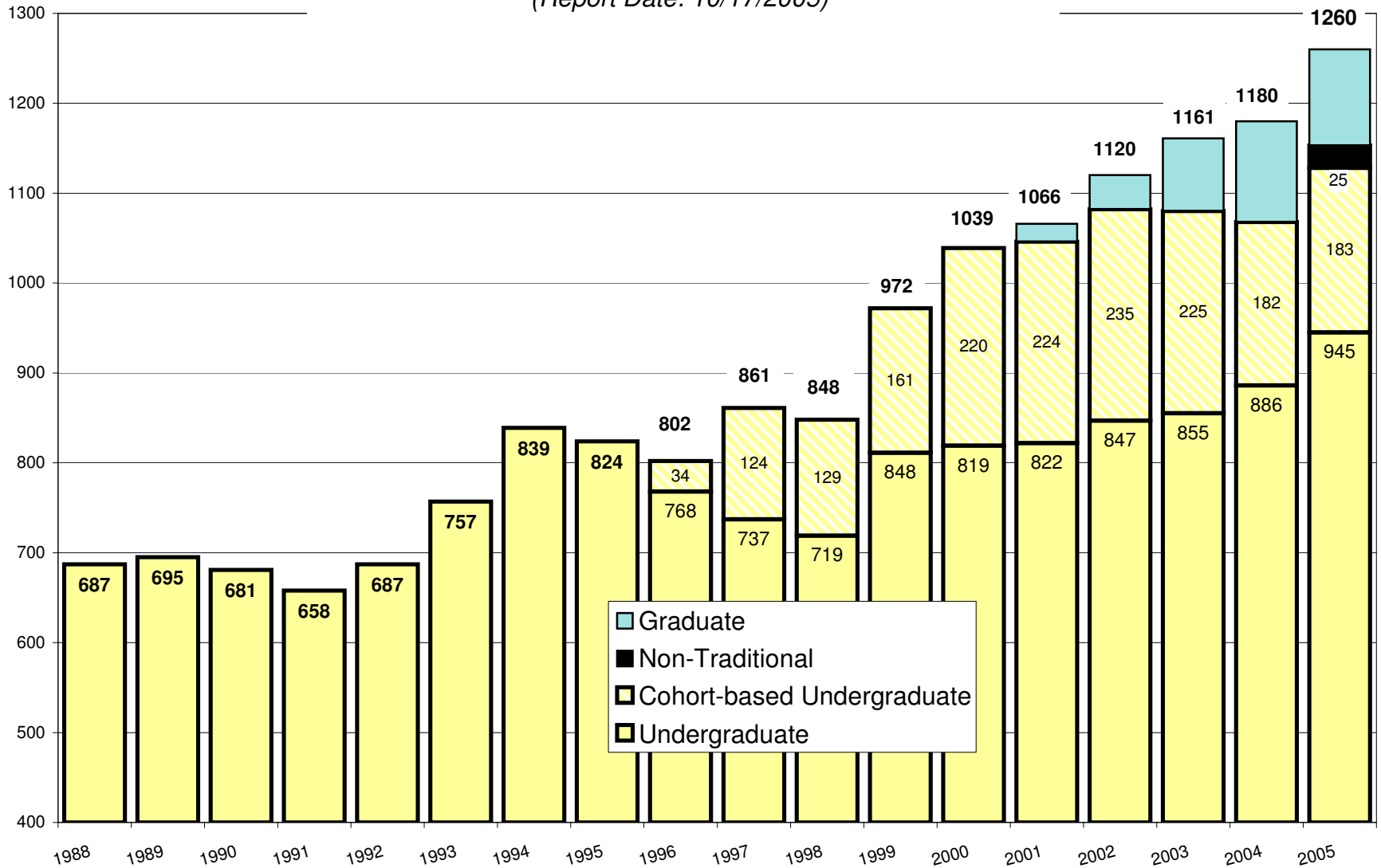


Northwest University Fall 2005 Enrollment Report

(Report Date: 10/17/2005)



NORTHWEST UNIVERSITY
Enrollment by Division and Major
Historical Comparisons - Fall Semesters

	2005	2004	2003	2002	2001	2000	1999	1998	1997	1996	1995	1994
UNDERGRADUATE PROGRAMS												
College of Arts & Sciences												
COMMUNICATION	53	46	51	45	37	22	13					
ECOINTENSIVE BIOLOGY				1	4	4	10	7	5			
ENGLISH	32	33	25	24	25	20	17					
ENVIRONMENTAL SCIENCE	7	9	8	3	3	9	7					
HISTORY	7	9	7	7	7	9	4					
INTERDISCIPLINARY STUDIES	14	20	17	18	25	17	17	15	18	21	27	18
MATHEMATICS	2											
POLITICAL SCIENCE/HISTORY	10	6	2									
PSYCHOLOGY / BEHAVIORAL SCIENCE	77	76	69	67	74	75	89	95	108	114	130	131
RELIGION & PHILOSOPHY	10	9	11	17	10	19	20	19	13	18	19	19
MUSIC (BA)	23	18	13	13	6	21						
MUSIC EDUCATION (BM)	11	12	14	14	14	12						
CHRISTIAN MUSIC INDUSTRY (BFA)	8	7	12	5	5							
MUSIC-MINISTRY / CHURCH MUSIC	22	25	18	13	11	15	32	38	29	27	22	35
<i>Music subtotals</i>	64	<i>62</i>	<i>57</i>	<i>45</i>	<i>36</i>	<i>48</i>	<i>32</i>	<i>38</i>	<i>29</i>	<i>27</i>	<i>22</i>	<i>35</i>
AA HEALTH SCIENCE		1			4	5	12	11	5	15	17	7
AA-GENERAL STUDIES / TRANSFER	7	11	13	7	15	20	26	22	36	39	36	45
ESL	3	2	2	5	4	2	8		3			
<i>CAS subtotals</i>	286	<i>284</i>	<i>262</i>	<i>239</i>	<i>244</i>	<i>250</i>	<i>255</i>	<i>207</i>	<i>217</i>	<i>234</i>	<i>251</i>	<i>255</i>
School of Business												
BUSINESS ADMINISTRATION	99	96	86	83	89	94	125	103	94	80	77	63
ORGANIZATIONAL MGMT - LEAP	128	134	155	211	224	221	162	131	126	34		
CCFP / AA / Other - LEAP	8	4	2	5								
<i>LEAP subtotals</i>	136	<i>138</i>	<i>157</i>	<i>216</i>	<i>224</i>	<i>221</i>	<i>162</i>	<i>131</i>	<i>126</i>	<i>34</i>	<i>0</i>	<i>0</i>
<i>BUS subtotals</i>	235	<i>234</i>	<i>243</i>	<i>299</i>	<i>313</i>	<i>315</i>	<i>287</i>	<i>234</i>	<i>220</i>	<i>114</i>	<i>77</i>	<i>63</i>
School of Education												
ELEMENTARY EDUCATION	75	86	88	104	108	123	134	135	132	149	167	171
SCED-BIOLOGY	3	4	2	6	6	8	3	3	2			
SCED-CHORAL MUSIC		1	1		1	2	5	5	10	9	4	4
SCED-ENGLISH		3	21	30	30	17	16	20	15	18	20	11
SCED-ENGLISH / LANGUAGE ARTS	9			1	2							
SCED-HEALTH/FITNESS	16	16	12	17	9	11						
SCED-HISTORY/SOCIAL SCIENCE		6	5	9	12	14	19	27	31	26	20	17
SCED-MATH	11											
SCED-PSYCHOLOGY				2	2	2	3	3		3	3	6
SCED-SOCIAL STUDIES	12	8	7	5	9							
SCED-TESL	1					1	4	4	4	5	3	4
SECONDARY EDUCATION (UNDECLARED)	8	8	11	9	1	13	5					
<i>EDSE subtotals</i>	60	<i>46</i>	<i>59</i>	<i>79</i>	<i>72</i>	<i>68</i>	<i>55</i>	<i>62</i>	<i>62</i>	<i>61</i>	<i>50</i>	<i>42</i>
STUDENT TEACHING/CERTIFICATION ONLY	16	29	26	11	12	4	5	2	16	11	16	5
TEACHING ESL			1					6	1	2	2	1
<i>EDU subtotals</i>	151	<i>161</i>	<i>174</i>	<i>194</i>	<i>192</i>	<i>195</i>	<i>194</i>	<i>205</i>	<i>211</i>	<i>223</i>	<i>235</i>	<i>219</i>
School of Ministry												
BIBLICAL LITERATURE	27	25	29	30	34	30	33	25	22	28	32	33
CHRISTIAN EDUCATION / CMIN-CHILDREN	19	15	10	14	9	15	19	19	18	23	21	22
CMIN-PASTORAL CARE / ADULT & FAMILY					1		4	4	7	5	5	5
GENERAL MINISTRIES	11	9	10	8	2							
INTERCULTURAL STUDIES	21	16	4									
MISSIONS / CMIN-MISSIONS	13	12	15	19	27	23	27	18	20	31	32	43
PASTORAL MINISTRIES / CMIN-PASTORAL	54	55	49	50	36	38	38	31	38	40	55	66
YOUTH MINISTRIES / CMIN-YOUTH	47	37	45	45	56	57	61	53	63	63	59	55
CERTIFICATION / DIPLOMA	1	0	1	1		1		2	2	2	4	1
<i>Traditional subtotals</i>	193	<i>169</i>	<i>163</i>	<i>167</i>	<i>165</i>	<i>164</i>	<i>182</i>	<i>152</i>	<i>170</i>	<i>192</i>	<i>208</i>	<i>225</i>
MINISTRY HEAD START	25											
MINISTRY LEADERSHIP - LEAP	45	42	42	19								
<i>SOM sub totals</i>	263	<i>211</i>	<i>205</i>	<i>186</i>	<i>165</i>	<i>164</i>	<i>182</i>	<i>152</i>	<i>170</i>	<i>192</i>	<i>208</i>	<i>225</i>
School of Nursing												
SCHOOL OF NURSING	165	136	123	108	83	59						
Undeclared												
UNDECLARED AND SPECIAL	53	42	50	56	49	56	54	50	43	39	53	77
UNDERGRADUATE TOTALS	1153	1068	1057	1082	1046	1039	972	848	861	802	824	839
GRADUATE PROGRAMS												
School of Business												
MASTER OF BUSINESS ADMINISTRATION	40	36	18									
School of Graduate Psychology												
COUNSELING PSYCHOLOGY	67	76	62	38	20							
<i>GRAD subtotals</i>	107	<i>112</i>	<i>80</i>	<i>38</i>	<i>20</i>	<i>0</i>	<i>0</i>	<i>0</i>	<i>0</i>	<i>0</i>	<i>0</i>	<i>0</i>
GRAND TOTAL ENROLLMENT	1260	1180	1137	1120	1066	1039	972	848	861	802	824	839

NORTHWEST UNIVERSITY
Enrollment by College/School and Gender/Major
All School Report - Fall 2005

	Freshman		Sophomore		Junior		Senior		Special		Graduate		Totals			% of declared undergrads	
	F	M	F	M	F	M	F	M	F	M	F	M	F	M	TOTAL		
College of Arts & Sciences																286	26.0%
COMMUNICATION	8	4	5	3	11	8	8	6					32	21	53	4.8%	
ENGLISH	3	0	7	2	6	1	11	2					27	5	32	2.9%	
ENVIRONMENTAL SCIENCE	0	0	0	1	2	2	0	2					2	5	7	0.6%	
HISTORY	0	1	0	1	1	0	3	1					4	3	7	0.6%	
INTERDISCIPLINARY STUDIES	1	0	1	0	1	2	4	5					7	7	14	1.3%	
MATHEMATICS	0	0	0	0	0	0	1	1					1	1	2	0.2%	
POLITICAL SCIENCE/HISTORY	1	0	3	1	1	1	2	1					7	3	10	0.9%	
PSYCHOLOGY	14	4	13	2	23	2	16	3					66	11	77	7.0%	
RELIGION & PHILOSOPHY	0	1	0	1	0	6	0	2					0	10	10	0.9%	
																0.0%	
MUSIC (BA)	3	3	5	3	2	2	4	1					14	9	23	2.1%	
MUSIC EDUCATION (BM)	1	0	3	0	3	2	2	0					9	2	11	1.0%	
CONTEMPORARY MUSIC (BFA)	2	2	0	2	0	2	0	0					2	6	8	0.7%	
MUSIC MINISTRY (BA)	4	3	4	3	1	1	4	2					13	9	22	2.0%	
																0.0%	
AA-HEALTH SCIENCES													0	0	0	0.0%	
AA-GENERAL STUDIES	0	1	3	2	1	0	0	0					4	3	7	0.6%	
ESL-PACIFIC RIM CENTRE	1	2	0	0	0	0	0	0					1	2	3	0.3%	
School of Business																235	21.4%
BUSINESS ADMINISTRATION	11	20	10	10	11	12	13	12					45	54	99	9.0%	
																0.0%	
ORGANIZATIONAL MGMT (LEAP)	11	9	22	6	27	21	12	14	1	5			73	55	128	11.6%	
																0.0%	
AA-(LEAP)	1	1						1					1	2	3	0.3%	
FAITH & PRACTICE CERT (LEAP)									3	2			3	2	5	0.5%	
School of Education																151	13.7%
ELEMENTARY EDUCATION	22	2	11	1	17	2	19	1					69	6	75	6.8%	
SEC ED-BIOLOGY	0	1	0	0	2	0	0	0					2	1	3	0.3%	
SEC ED-CHORAL MUSIC													0	0	0	0.0%	
SEC ED-ENGLISH/LANGUAGE ARTS	2	0	3	0	0	2	1	1					6	3	9	0.8%	
SEC ED-HEALTH/FITNESS	3	2	2	3	1	2	3	0					9	7	16	1.5%	
SEC ED-HISTORY													0	0	0	0.0%	
SEC ED-MATHEMATICS	1	2	0	2	2	3	0	1					3	8	11	1.0%	
SEC ED-SOCIAL SCIENCES	0	2	0	2	2	3	3	0					5	7	12	1.1%	
SEC ED-TESL	1	0	0	0	0	0	0	0					1	0	1	0.1%	
SEC ED-UNDECLARED	3	1	0	0	1	0	3	0					7	1	8	0.7%	
																0.0%	
SEC ED-STUDENT TEACHING									7	1			7	1	8	0.7%	
SEC ED-CERTIFICATION ONLY							1		4	3			5	3	8	0.7%	
School of Ministry																263	23.9%
BIBLICAL LITERATURE	1	3	1	5	1	9	2	5					5	22	27	2.5%	
CHILDREN'S MINISTRIES	5	0	3	2	3	0	4	2					15	4	19	1.7%	
CHRISTIAN EDUCATION	0	0	0	0	0	0	0	0					0	0	0	0.0%	
GENERAL MINISTRIES	0	3	2	0	1	0	4	1					7	4	11	1.0%	
INTERCULTURAL STUDIES	3	1	4	3	3	0	5	2					15	6	21	1.9%	
MISSIONS	5	3	1	2	2	0	0	0					8	5	13	1.2%	
PASTORAL MINISTRIES	4	15	3	8	3	9	1	11					11	43	54	4.9%	
YOUTH MINISTRIES	3	12	3	5	3	12	3	6					12	35	47	4.3%	
CERTIFICATION	1												1	0	1	0.1%	
																0.0%	
MINISTRY HEAD START									12	13			12	13	25	2.3%	
																0.0%	
MINISTRY LEADERSHIP (LEAP)	8	6	5	4	5	4	5	6	0	2			23	22	45	4.1%	
School of Nursing																165	15.0%
NURSING	58	2	43	3	27	4	24	4					152	13	165	15.0%	
Undeclared																53	
UNDECLARED & SPECIAL	25	10	5	2					8	3			38	15	53		
School of Business																40	
MASTER OF BUSINESS ADMIN											14	26	14	26	40		
School of Graduate Psychology																67	
GRADUATE PSYCHOLOGY											57	10	57	10	67		
TOTALS	206	116	162	79	163	112	158	93	35	29	71	36	795	465	1260		

NORTHWEST UNIVERSITY

Total Freshman Class Enrollment Trends

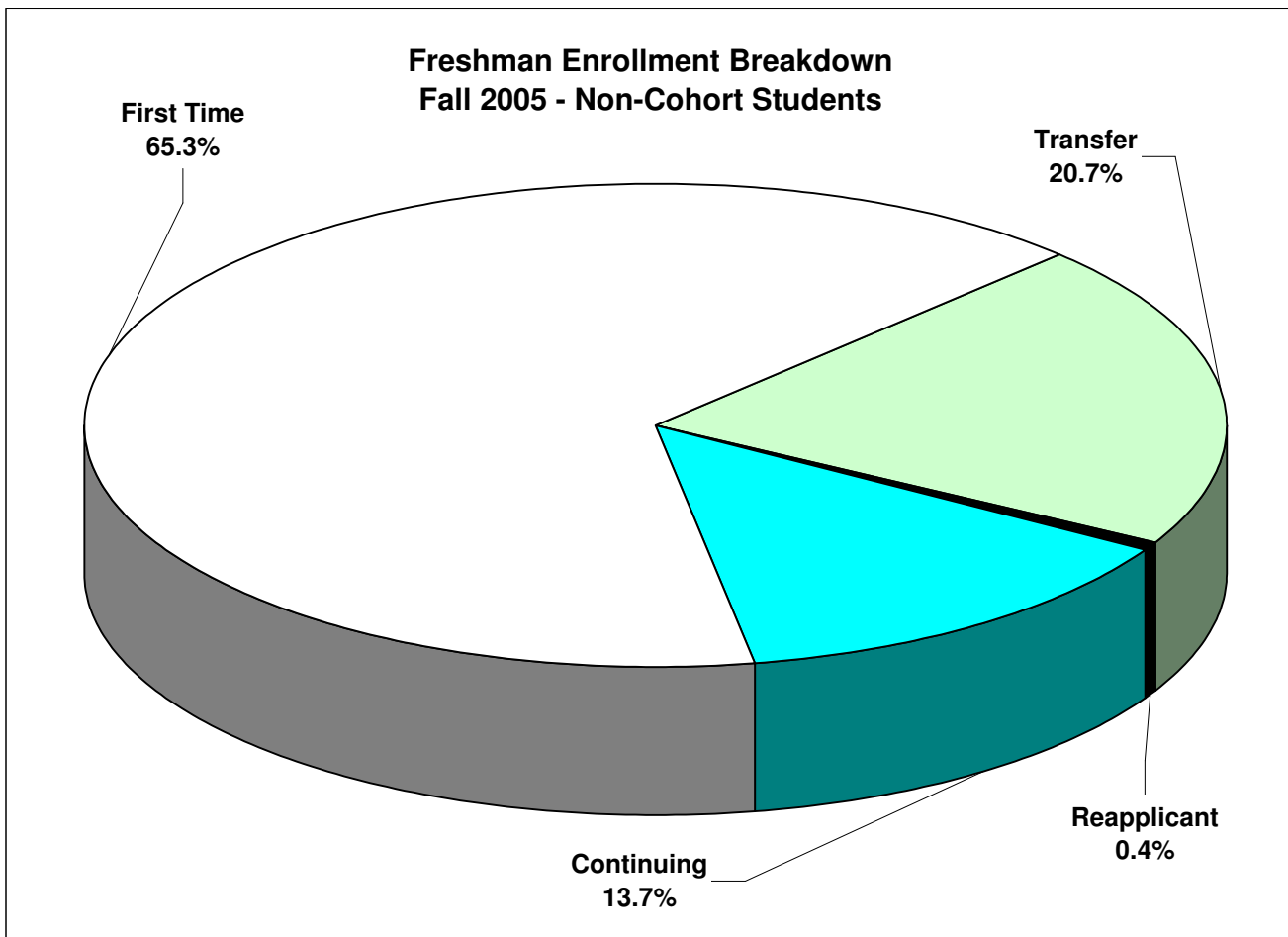
All School Report - Fall 2005

Non-Cohort Based Undergraduate Students

	First Time Freshmen		Transfer Freshmen		Total New Freshmen		Reapplying Freshmen		Continuing Freshmen	
	Count	Percentage	Count	Percentage	Count	Percentage	Count	Percentage	Count	Percentage
1995	167	59.4%	39	13.9%	206	73.3%	10	3.6%	65	23.1%
1996	132	54.3%	45	18.5%	177	72.8%	6	2.5%	60	24.7%
1997	165	72.4%	23	10.1%	188	82.5%	3	1.3%	37	16.2%
1998	146	57.7%	51	20.2%	197	77.9%	4	1.6%	52	20.6%
1999	210	61.9%	71	20.9%	281	82.9%	4	1.2%	54	15.9%
2000	196	61.1%	62	19.3%	258	80.4%	1	0.3%	62	19.3%
2001	169	67.9%	43	17.3%	212	85.1%	1	0.4%	36	14.5%
2002	156	62.4%	48	19.2%	204	81.6%	3	1.2%	43	17.2%
2003	171	66.0%	51	19.7%	222	85.7%	1	0.4%	36	13.9%
2004	132	48.5%	70	25.7%	202	74.3%	3	1.1%	67	24.6%
2005	186	65.3%	59	20.7%	245	86.0%	1	0.4%	39	13.7%

Cohort Based (LEAP) Undergraduate Students

2003	2	12.5%	7	43.8%	9	56.3%	0	0.0%	7	43.8%
2004	3	15.0%	7	35.0%	10	50.0%	2	10.0%	8	40.0%
2005	11	30.6%	21	58.3%	32	88.9%	1	2.8%	3	8.3%



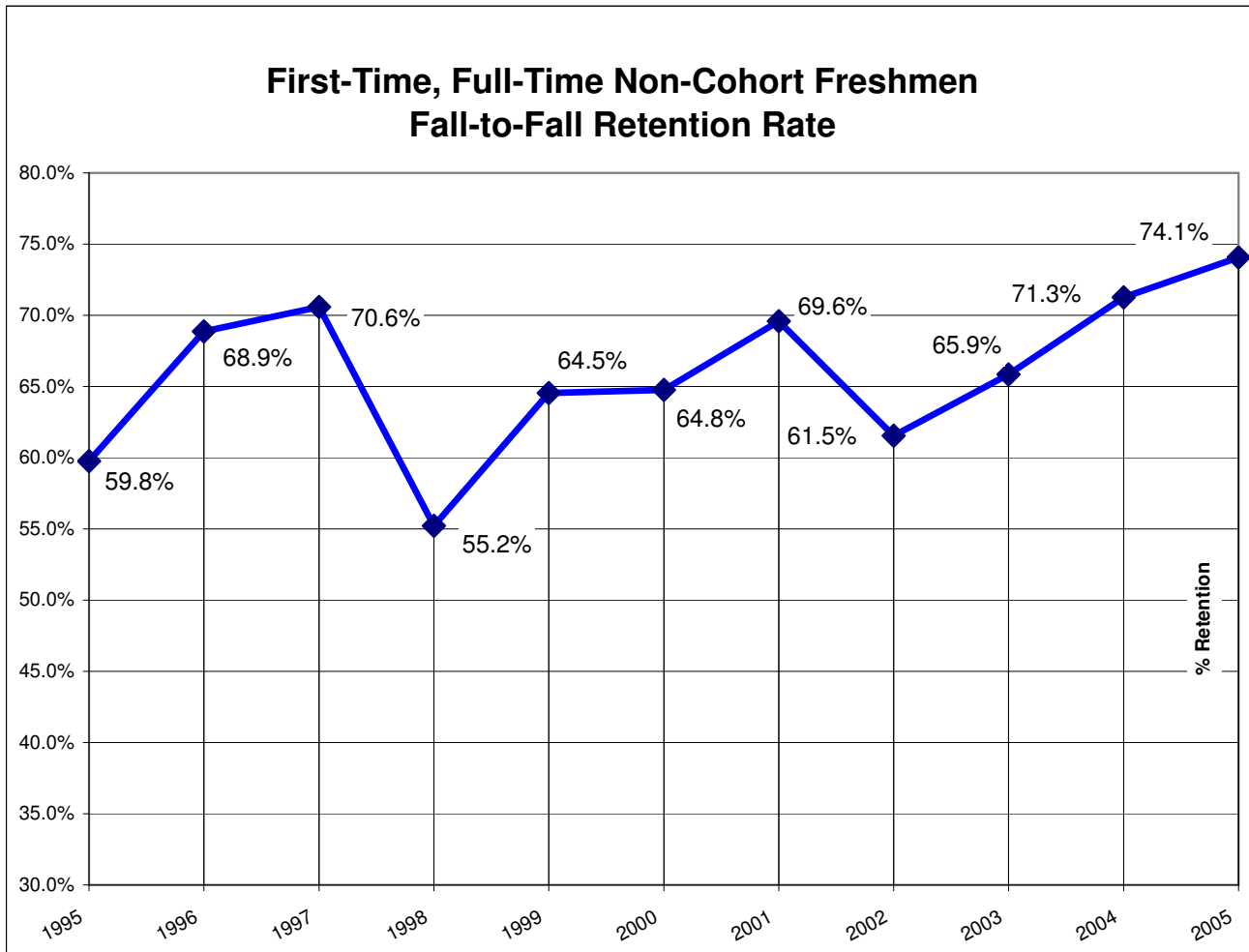
NORTHWEST UNIVERSITY

Fall Semester, First-Time, Full-Time Freshmen Retention Rates Undergraduate Report - Fall 2005

Non-Cohort Students	# First-time Freshmen Previous Fall	Returning as Freshmen	Returning as at least Sophomores	Fall-Fall Retention Rate
1995	174	39	65	59.8%
1996	167	39	76	68.9%
1997	136	19	77	70.6%
1998	163	32	58	55.2%
1999	141	26	65	64.5%
2000	210	47	89	64.8%
2001	194	32	103	69.6%
2002	169	32	72	61.5%
2003	164	25	83	65.9%
2004	181	48	81	71.3%
2005	135	25	75	74.1%

Cohort Based (LEAP) Students				
2005	3	1	1	66.7%

Undergraduate Fall-to-Fall Retention Rate				
2005	138	26	76	73.9%



NORTHWEST UNIVERSITY

Enrollment by Denomination

All School Report - Fall 2005

(based on declared denomination from semester Registration Process)

	2005			2004	2003	2002	2001	2000	1999
	total	trad	LEAP/MA						
Assemblies of God	562	500	62	563	544	569	526	527	538
Baptist	60	45	15	53	45	51	46	44	44
Catholic	12	6	6	11	5	5	7	9	8
Christian	34	23	11	19	18	19	34	30	19
Church Of God In Christ	5	4	1	7	12	5	6	7	10
Foursquare	78	50	28	69	62	69	56	63	52
Full Gospel/Pentecostal	23	16	7	18	13	12	14	14	11
Indep/Inter/Nondenominational	255	165	90	245	200	199	204	209	200
Lutheran	27	19	8	23	10	13	11	9	8
Methodist	14	10	4	20	14	13	10	3	5
Nazarene	8	7	1	4	2	7	11	11	4
Presbyterian	27	19	8	31	28	27	23	20	19
Other & Unknown	155	106	49	117	208	131	118	93	54
Total	1260	970	290	1180	1161	1120	1066	1039	972

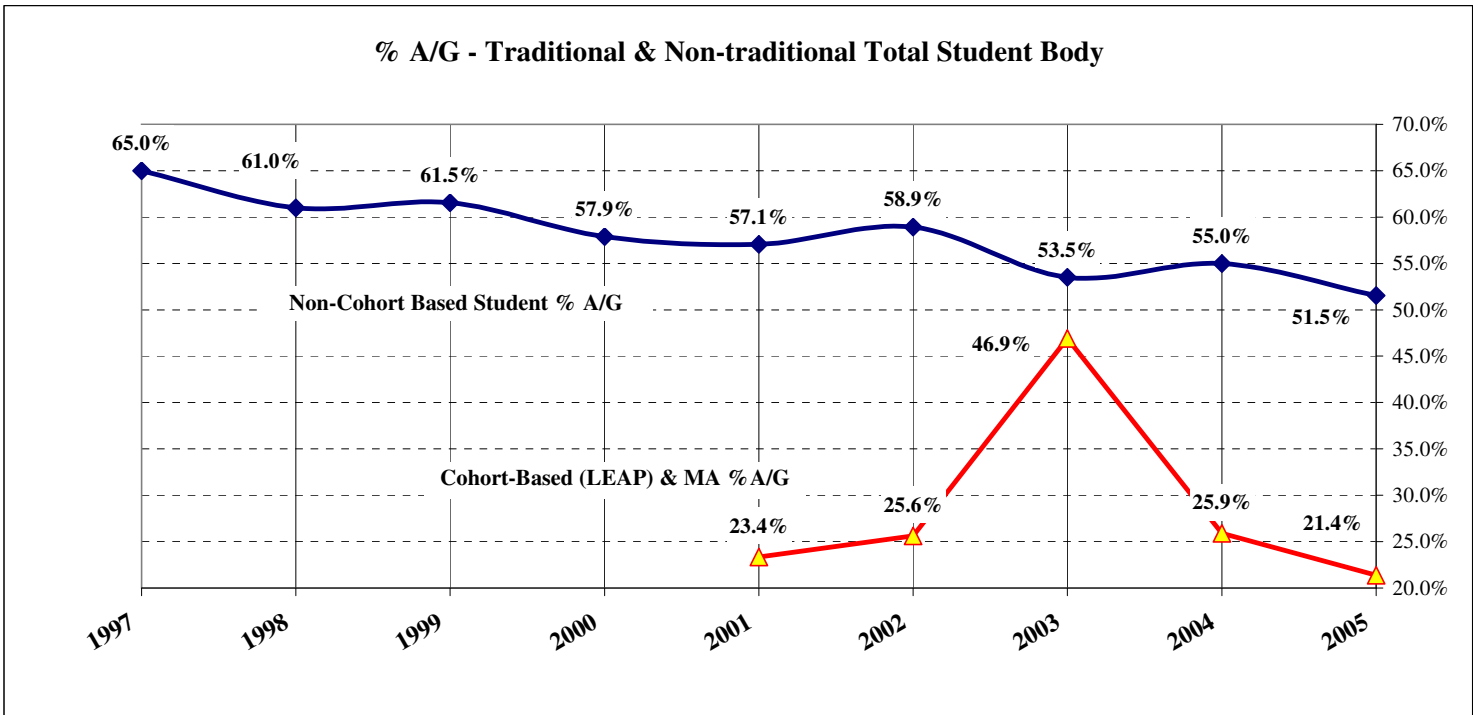
Assemblies of God Declared Students

% Assemblies of God - Total Student Body

	2005	2004	2003	2002	2001	2000	1999	1998	1997
Total Students	1260	1180	1161	1120	1066	1039	972	848	861
Total A/G	562	563	544	569	526	527	538	477	517
% A/G	44.6%	47.7%	46.9%	50.8%	49.3%	50.7%	55.3%	56.3%	60.0%

% Assemblies of God - by Program

	2005	2004	2003	2002	2001	2000	1999	1998	1997
Non-Cohort Based % A/G	51.5%	55.0%	53.5%	58.9%	57.1%	57.9%	61.5%	61.0%	65.0%
Cohort (LEAP) & MA % A/G	21.4%	25.9%	46.9%	25.6%	23.4%	24.1%	na	na	na

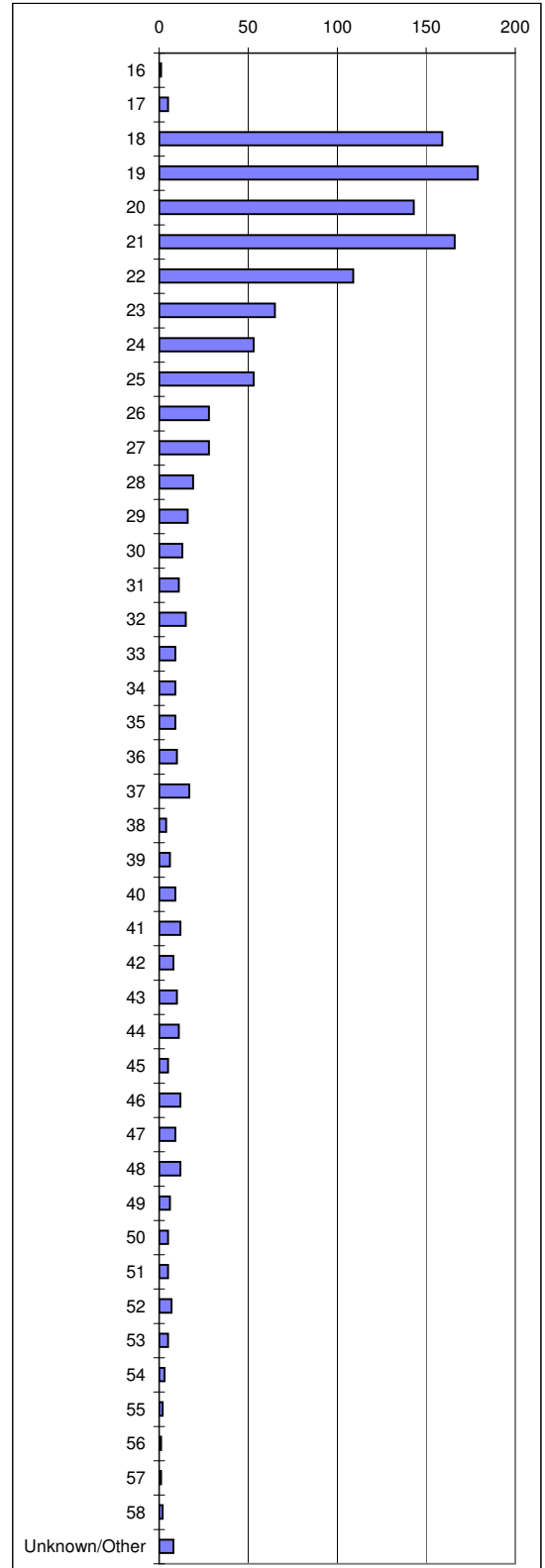


NORTHWEST UNIVERSITY

Enrollment by Age

All School Report - Fall 2005

Age	Freshmen	Sophomore	Junior	Senior	Other	MA	Totals
16	1	0	0	0	0	0	1
17	3	1	0	0	1	0	5
18	134	11	6	0	8	0	159
19	77	68	22	7	5	0	179
20	21	45	63	10	3	1	143
21	22	24	46	68	4	2	166
22	7	11	31	47	9	4	109
23	2	11	12	29	5	6	65
24	6	11	11	13	2	10	53
25	4	11	9	16	2	11	53
26	2	3	9	7	1	6	28
27	4	5	8	5	0	6	28
28	1	2	4	6	1	5	19
29	3	1	3	4	0	5	16
30	3	0	2	3	1	4	13
31	3	1	4	1	1	1	11
32	3	1	3	4	1	3	15
33	2	0	3	1	2	1	9
34	0	4	1	0	0	4	9
35	0	0	4	3	1	1	9
36	1	0	3	1	1	4	10
37	2	2	4	3	3	3	17
38	1	0	1	0	2	0	4
39	1	2	0	0	1	2	6
40	1	3	3	0	0	2	9
41	4	1	4	0	1	2	12
42	2	2	0	2	0	2	8
43	1	4	2	1	0	2	10
44	0	2	5	1	2	1	11
45	1	2	1	1	0	0	5
46	1	2	2	3	2	2	12
47	0	1	3	1	1	3	9
48	1	1	2	3	1	4	12
49	1	1	0	0	1	3	6
50	1	2	1	0	1	0	5
51	0	1	0	2	0	2	5
52	1	0	1	2	0	3	7
53	1	0	1	1	1	1	5
54	0	2	0	1	0	0	3
55	0	1	0	0	0	1	2
56	0	1	0	0	0	0	1
57	0	0	0	1	0	0	1
58	0	1	1	0	0	0	2
Unknown/Other	2	2	0	4	0	0	8
Totals	320	243	275	251	64	107	1260
Average Age	18.5	21.5	22.0	22.7	30.0	33.5	24.6



NORTHWEST UNIVERSITY

Enrollment by Marital Status

All School Report - Fall 2005

All School Married Students

	Men			Women			Total		
	2005	2004	2003	2005	2004	2003	2005	2004	2003
Freshmen	8	7	9	23	13	19	31	20	28
Sophomores	14	27	23	31	19	18	45	46	41
Juniors	29	32	39	28	25	31	57	57	70
Seniors	30	43	43	26	31	35	56	74	78
Special/Grad	33	39	21	52	46	35	85	85	56
Totals	114	148	135	160	134	138	274	282	273

All School Single Students

	Men			Women			Total		
	2005	2004	2003	2005	2004	2003	2005	2004	2003
Freshmen	108	78	91	183	159	162	291	237	253
Sophomores	65	64	58	131	130	122	196	194	180
Juniors	83	80	71	135	138	122	218	218	193
Seniors	63	65	70	132	107	142	195	172	212
Special/Grad	32	15	14	54	62	36	86	77	50
Totals	351	302	304	635	596	584	986	898	888

2005 Non-Cohort & Cohort (LEAP) Undergraduate Students

	2005-Non-Cohort			
	Married		Single	
	Men	Women	Men	Women
Freshmen	1	8	99	178
Sophomores	7	16	62	119
Juniors	11	14	76	117
Seniors	16	16	56	125
Special/Grad	3	10	17	19
Totals	38	64	310	558

	2005-Cohort (LEAP)			
	Married		Single	
	Men	Women	Men	Women
Freshmen	7	15	9	5
Sophomores	7	15	3	12
Juniors	18	14	7	18
Seniors	14	10	7	7
Special/Grad	5	5	4	1
Totals	51	59	30	43

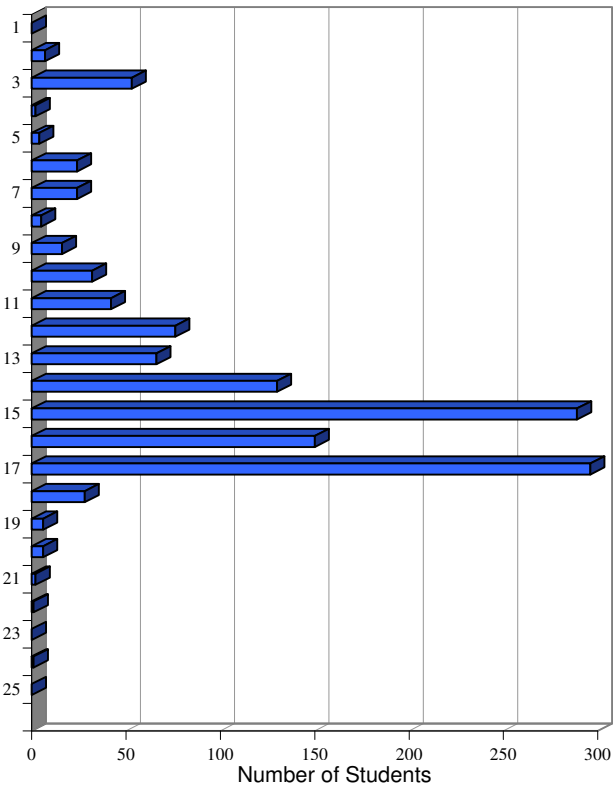
NORTHWEST UNIVERSITY

Enrollment by Academic Load

All School Report - Fall 2005

All School

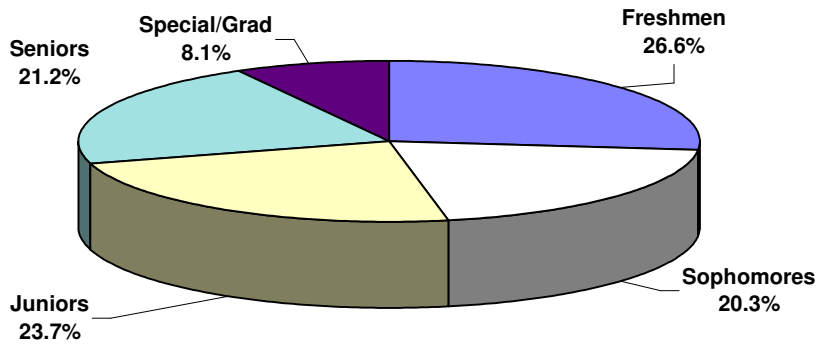
# Credits	# Students	Total Credit Hours
1	0	0
2	7	14
3	53	159
4	2	8
5	4	20
6	24	144
7	24	168
8	5	40
9	16	144
10	32	320
11	42	462
12	76	912
13	66	858
14	130	1820
15	289	4335
16	150	2400
17	296	5032
18	28	504
19	6	114
20	6	120
21	2	42
22	1	22
23	0	0
24	1	24
25	0	0
26	0	0
Total	1260	17662



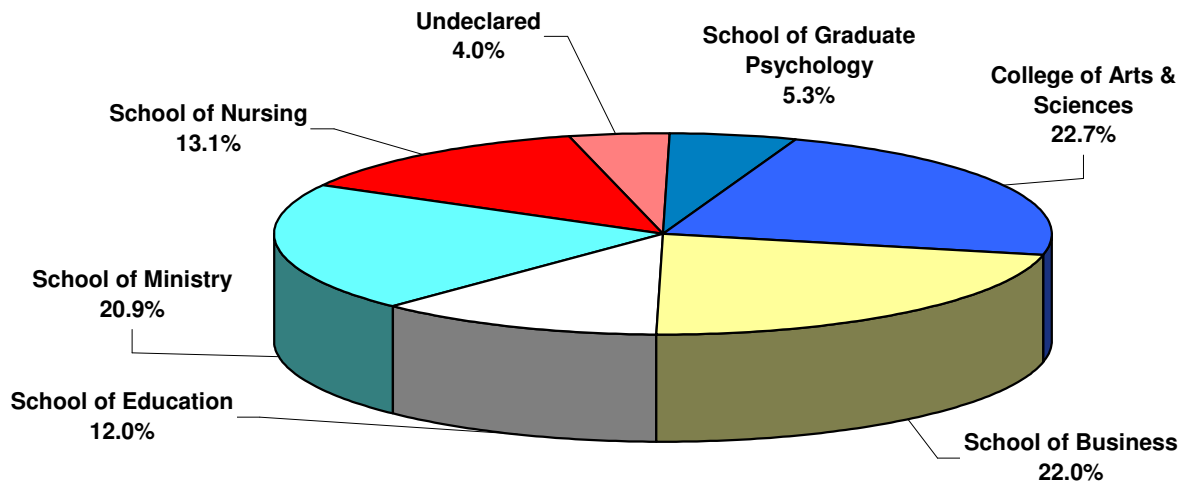
All School

Class	Total Credits	2005			Average Credits		
		Students	Average Credits	2004	2003	2002	
Freshmen	4703	322	14.6	14.5	14.1	14.6	
Sophomores	3592	241	14.9	14.9	14.8	15.1	
Juniors	4189	275	15.2	15.3	15.3	15.6	
Seniors	3753	251	15.0	14.3	14.1	14.6	
Special/Grad	1425	171	8.3	10.0	9.8	10.8	
All School	17662	1260	14.0	14.1	14.1	14.7	

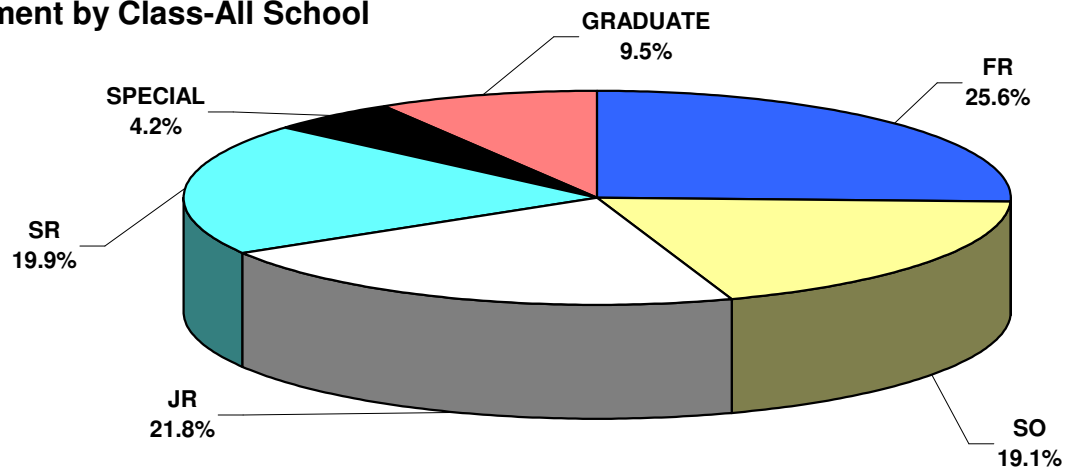
Credits by Class



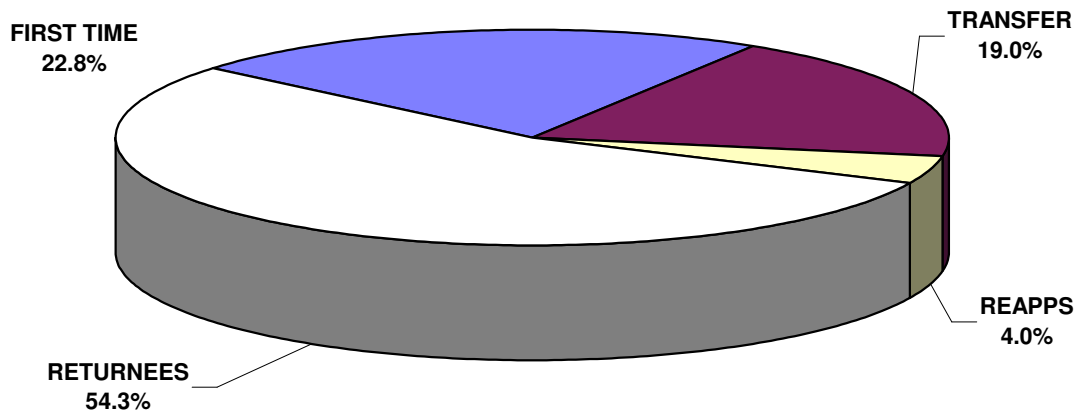
Enrollment by College/School



Enrollment by Class-All School



Enrollment by Status-All School

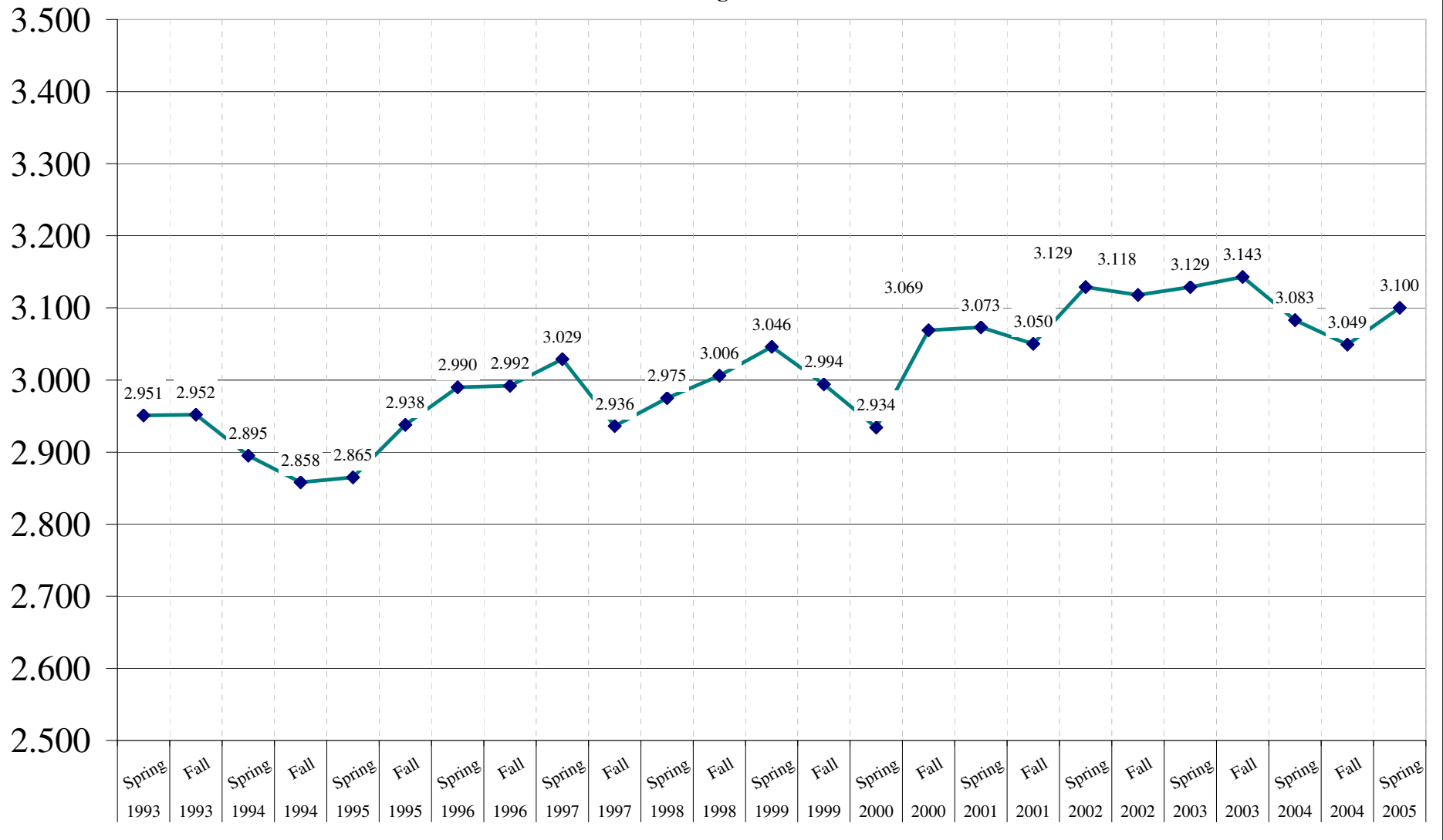


Northwest University

Average GPA History

(GPA of all graded courses at end of indicated semester)

Non-Cohort Undergraduate Students

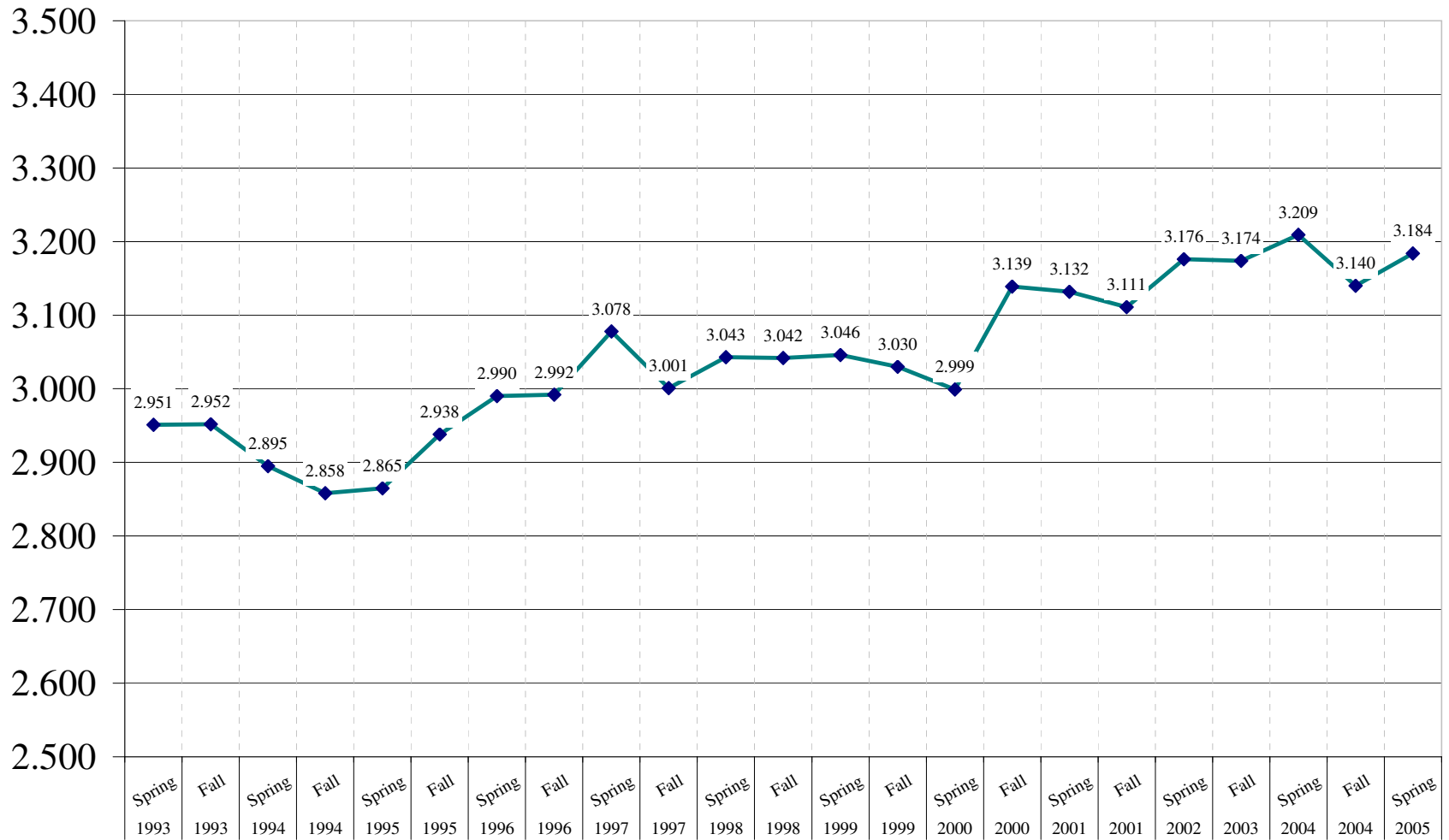


Northwest University

Average GPA History

(GPA of all graded courses at end of indicated semester)

All Students



NORTHWEST UNIVERSITY

Enrollment Report Matrix

All School Report - Fall 2005

CLASS	COLLEGE OF ARTS AND SCIENCES				SCHOOL OF BUSINESS				SCHOOL OF EDUCATION				SCHOOL OF MINISTRY				SCHOOL OF NURSING				ASSOCIATE IN ARTS				SCHOOL OF GRADUATE PSYCHOLOGY			
	FT M	FT F	PT M	PT F	FT M	FT F	PT M	PT F	FT M	FT F	PT M	PT F	FT M	FT F	PT M	PT F	FT M	FT F	PT M	PT F	FT M	FT F	PT M	PT F	FT M	FT F	PT M	PT F
FR	20	37		1	28	22	1		9	31	1	1	41	29	2	1	2	58			1	1	1					
SO	16	40	3	1	14	29	2	3	8	15		1	29	20		2	2	41	1	2	2	3						
JR	29	49		2	31	38	2		12	25			32	19	2	2	4	25		2		1						
SR	24	51	2	4	20	21	7	4	3	30			29	22	4	2	4	24										
SP					4	1	1		4	9		2	1			16	15											
GR					26	13		1															8	57	2			
TOTAL	89	177	5	8	123	124	13	8	36	110	1	4	132	90	24	22	12	148	1	4	3	5	1	0	8	57	2	0
FT/PT	266	95.3%	13	4.7%	247	92.2%	21	7.8%	146	96.7%	5	100.0%	222	90.2%	46	17.2%	160	97.0%	5	3.0%	8	88.9%	1	11.1%	65	97.0%	2	3.0%
M/F	94	33.7%	185	66.3%	136	50.7%	132	49.3%	37	24.5%	114	75.5%	156	58.2%	112	41.8%	13	7.9%	152	92.1%	4	44.4%	5	55.6%	10	14.9%	57	85.1%

CLASS	ALL SCHOOL			
	FT	PT	M	F
FR	313	9	116	206
SO	226	15	79	162
JR	265	10	112	163
SR	228	23	93	158
SP	19	45	29	35
GR	104	3	36	71
TOTAL	1155	105	465	795
	91.7%	8.3%	36.9%	63.1%

1260 1260

FIRST TIME		TRANSFER		REAPPS		RETURNEES		TOTAL		TOTAL	
M	F	M	F	M	F	M	F	M	F		
66	132	33	47		2	17	25	116	206	322	25.6%
5	7	27	43	2	10	45	102	79	162	241	19.1%
5	1	31	44	8	7	68	111	112	163	275	21.8%
			1	5	6	88	151	93	158	251	19.9%
11	10	5	6	5	5	8	14	29	35	64	5.1%
13	37		2			23	32	36	71	107	8.5%
100	187	96	143	20	30	249	435	465	795	1260	
	287		239		50		684	36.9%	63.1%		
	22.8%		19.0%		4.0%		54.3%				

KEY
M = MALE
F = FEMALE
FR = FRESHMEN
SO = SOPHOMORES
JR = JUNIORS
SR = SENIORS
NON-COHORT = NON-LEAP, NON-MHS UNDERGRADUATE STUDENTS
LEAP = COHORT-BASED STUDENTS
NON-TRAD = MINISTRY HEAD-START
GR = GRADUATE PROGRAMS (MA)
FT = FULL-TIME
PT = PART-TIME
FTE = FULL-TIME EQUIVALENCE

COLLEGE / SCHOOL	FT/M	FT/F	PT/M	PT/F	TOTAL	
COLLEGE OF ARTS & SCIENCES	89	177	5	8	279	22.1%
SCHOOL OF BUSINESS	123	124	13	8	268	21.3%
SCHOOL OF EDUCATION	36	110	1	4	151	12.0%
SCHOOL OF MINISTRY	132	90	24	22	268	21.3%
SCHOOL OF NURSING	12	148	1	4	165	13.1%
ASSOCIATE OF ARTS	3	5	1		9	0.7%
UNDECLARED	12	29	3	9	53	4.2%
GRADUATE PSYCHOLOGY	8	57	2		67	5.3%
TOTAL	415	740	50	55	1260	
	1155	105				
	91.7%	8.3%				

HEADCOUNT	NON-COHORT	LEAP	NON-TRAD	GR	TOTAL
FT TOTAL	903	148	0	104	1155
PT TOTAL	42	35	25	3	105
TOTAL	945	183	25	107	1260
	75.0%	14.5%	2.0%	8.5%	

FTE	NON-COHORT	LEAP	NON-TRAD	GR	TOTAL
PT HOURS	229	191	75	16	511
PT FTE	19.1	15.9	6.3	1.9	43.2
FT FTE	903.0	148.0	0.0	104.0	1155.0
TOTAL FTE	922.1	163.9	6.3	105.9	1198.2
	77.0%	13.7%	0.5%	8.8%	

FTE / HEADCOUNT	
NON-COHORT	97.6%
LEAP	89.6%
NON-TRAD	25.0%
GR	99.0%
TOTAL	95.1%

NORTHWEST UNIVERSITY

Enrollment Report Matrix

Report by Program - Fall 2005

Non-Cohort Undergraduate Students

CLASS	COLLEGE OF ARTS AND SCIENCES				SCHOOL OF BUSINESS				SCHOOL OF EDUCATION				SCHOOL OF MINISTRY				SCHOOL OF NURSING				ASSOCIATE IN ARTS				UNDECLARED			
	FT M	FT F	PT M	PT F	FT M	FT F	PT M	PT F	FT M	FT F	PT M	PT F	FT M	FT F	PT M	PT F	FT M	FT F	PT M	PT F	FT M	FT F	PT M	PT F	FT M	FT F	PT M	PT F
FR	20	37		1	20	11			9	31	1	1	35	22	2		2	58					10	24			1	
SO	16	40	3	1	10	10			8	15		1	25	16		1	2	41	1	2	2	3			2	5		
JR	29	49		2	12	11			12	25			29	15	1	1	4	25		2		1						
SR	24	51	2	4	11	13	1		3	30			26	18	1	1	4	24										
SP									4	9		2														3	6	
TOTAL	89	177	5	8	53	45	1	0	36	110	1	4	115	71	4	3	12	148	1	4	2	4	1	0	12	29	3	7
FT/PT	266	95.3%	13	4.7%	98	99.0%	1	1.0%	146	96.7%	5	100.0%	186	97.9%	7	3.6%	160	97.0%	5	3.0%	6	85.7%	1	14.3%	41	80.4%	10	19.6%
M/F	94	33.7%	185	66.3%	54	54.5%	45	45.5%	37	24.5%	114	75.5%	119	61.7%	74	38.3%	13	7.9%	152	92.1%	3	42.9%	4	57.1%	15	29.4%	36	70.6%

Non-Cohort Undergraduate Students

CLASS	Non-Cohort Based Students			
	FT	PT	M	F
FR	279	7	100	186
SO	195	9	69	135
JR	212	6	87	131
SR	204	9	72	141
SP	13	11	7	17
GR				
TOTAL	903	42	335	610
	95.6%	4.4%	35.4%	64.6%

Non-Cohort Undergraduate Students

Non-Cohort Based Students											
FIRST TIME		TRANSFER		REAPPS		CONTINUING		TOTAL		TOTAL	
M	F	M	F	M	F	M	F	M	F		
63	124	22	37		1	15	24	100	186	286	30.3%
5	7	19	24	2	6	43	98	69	135	204	21.6%
5	1	23	28	4	4	55	98	87	131	218	23.1%
				1	4	71	137	72	141	213	22.5%
		1	1	4	4	2	12	7	17	24	2.5%
								0	0	0	0.0%
73	132	65	90	11	19	186	369	335	610	945	
	205		155		30		555		35.4%	64.6%	
	21.7%		16.4%		3.2%		58.7%				

Graduate Students

GRADUATE STUDENTS										
TRANSFER		REAPPS		CONTINUING		TOTAL		TOTAL	%	
M	F	M	F	M	F	M	F			
						0	0	0	0.0%	
						0	0	0	0.0%	
						0	0	0	0.0%	
						0	0	0	0.0%	
13	39			23	32	36	71	107	100.0%	
13	39	0	0	23	32	36	71	107		
	52		0		55		33.6%	66.4%		
	48.6%		0.0%		51.4%					

Non-Cohort Undergraduate Students

COLLEGE / SCHOOL	FT/M	FT/F	PT/M	PT/F	TOTAL	%
COLLEGE OF ARTS & SCIENCES	89	71	4	3	167	17.7%
SCHOOL OF BUSINESS	53	177	5	8	243	25.7%
SCHOOL OF EDUCATION	36	110	1	4	151	16.0%
SCHOOL OF MINISTRY	115	45	1		161	17.0%
SCHOOL OF NURSING	12	148	1	4	165	17.5%
ASSOCIATE OF ARTS	2	4	1		7	0.7%
UNDECLARED	12	29	3	7	51	5.4%
TOTAL	319	584	16	26	945	
		95.6%		4.4%		

Cohort-Based (LEAP) Undergraduate Students

CLASS	Cohort Based (LEAP) Students															
	TOTAL ENROLLMENT				FIRST TIME		TRANSFER		REAPPS		CONTINUING		TOTAL			
	M	F	FT	PT	M	F	M	F	M	F	M	F	M	F	TOTAL	
FR	16	20	34	2	3	8	11	10		1	2	1	16	20	36	19.7%
SO	10	27	31	6			8	19		4	2	4	10	27	37	20.2%
JR	25	32	53	4			8	16	4	3	13	13	25	32	57	31.1%
SR	21	17	24	14				1	4	2	17	14	21	17	38	20.8%
SP	9	6	6	9	2	1		2	1	1	6	2	9	6	15	8.2%
TOTAL	81	102	148	35	5	9	27	48	9	11	40	34	81	102	183	
		183		183		14		75		20		74		44.3%	55.7%	
		44.3%		55.7%		80.9%		19.1%		7.7%		41.0%		10.9%		40.4%

All Students

HEADCOUNT	NON-COHORT	LEAP	NON-TRAD	GR	TOTAL
FT TOTAL	903	148	0	104	1155
PT TOTAL	42	35	25	3	105
TOTAL	945	183	25	107	1260
	75.0%	14.5%	2.0%	8.5%	

FTE	NON-COHORT	LEAP	NON-TRAD	GR	TOTAL
PT HOURS	229	191	75	16	511
PT FTE	19.1	15.9	6.3	1.9	43.2
FT FTE	903.0	148.0	0.0	104.0	1155.0
TOTAL FTE	922.1	163.9	6.3	105.9	1198.2
	77.0%	13.7%	0.5%	8.8%	

FTE / HEADCOUNT	
NON-COHORT	97.6%
LEAP	89.6%
NON-TRAD	25.0%
GR	99.0%
TOTAL	95.1%

KEY
M = MALE
F = FEMALE
FR = FRESHMEN
SO = SOPHOMORES
JR = JUNIORS
SR = SENIORS
NON-COHORT = NON-LEAP, NON-MHS UNDERGRADUATE STUDENTS
LEAP = COHORT-BASED STUDENTS
NON-TRAD = MINISTRY HEAD-START
GR = GRADUATE PROGRAMS (MA)
FT = FULL-TIME
PT = PART-TIME
FTE = FULL-TIME EQUIVALENCE