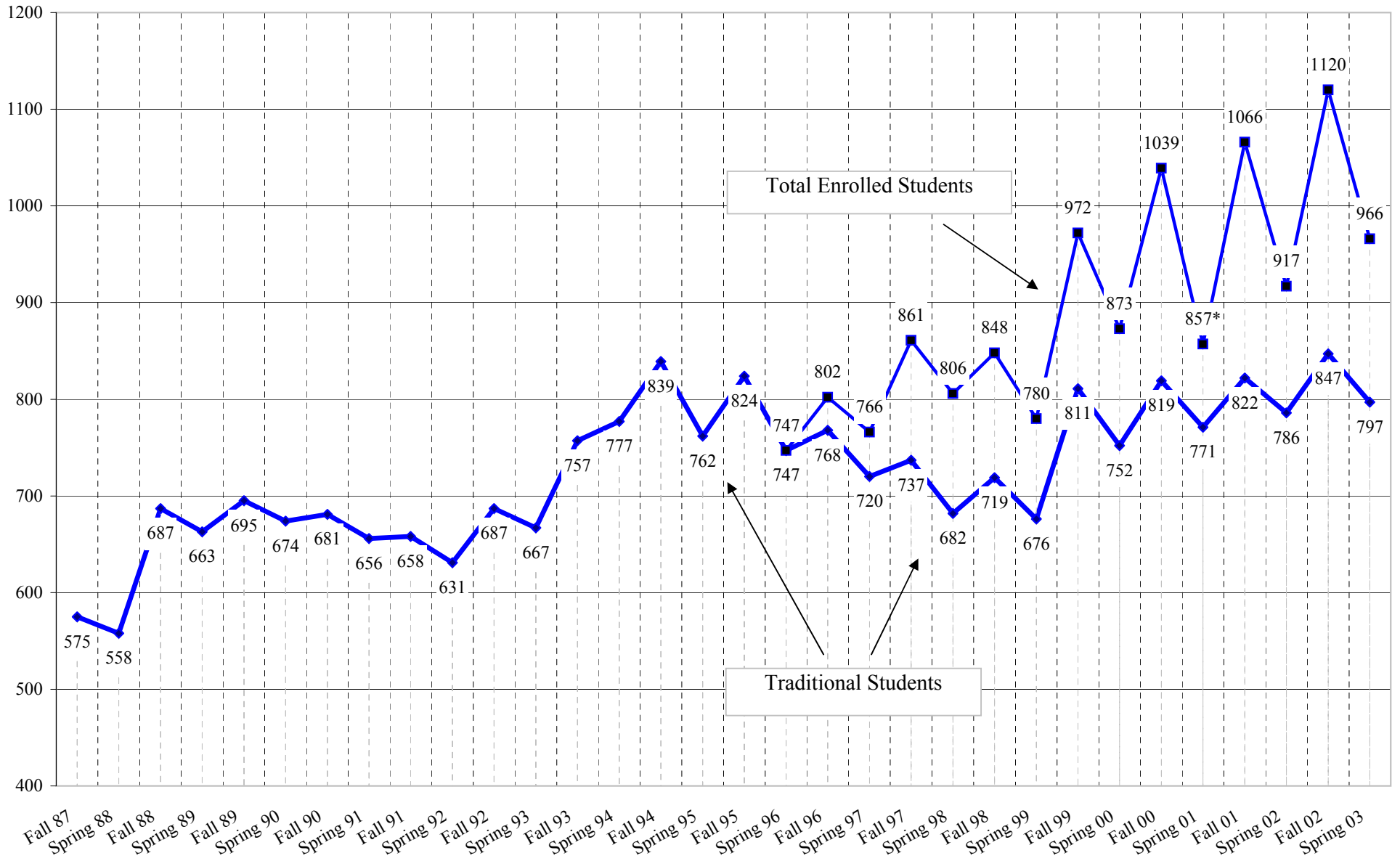


Northwest College Enrollment History

(2/14/03)



Enrollment Report Spring 2003 All School Report

CLASS	SCHOOL OF MINISTRY				DIVISION OF DISTRIBUTED LEARNING				DIVISION OF HUMANITIES				DIVISION OF EDUCATION				DIVISION OF NATURAL AND SOCIAL SCIENCES				ASSOCIATE IN ARTS				UNDECLARED			
	FT M	FT F	PT M	PT F	FT M	FT F	PT M	PT F	FT M	FT F	PT M	PT F	FT M	FT F	PT M	PT F	FT M	FT F	PT M	PT F	FT M	FT F	PT M	PT F	FT M	FT F	PT M	PT F
FR	18	14			8	3	1	2	14	19			5	16			19	47			2	2			11	13		1
SO	29	4	2	1	5	4	1		12	26			6	27			12	37		1		3		2	10			
JR	28	13		1	23	21	2	2	23	25			8	30			14	42		1			1	1				
SR	29	17	5	2	16	19	7	7	14	28			14	30			25	46		1								
SP	1		1				1	1		1	3	2	4	14	3	1		1	2							3	2	
GR											1				1	5												
TOTAL	105	48	8	4	52	47	12	12	63	99	3	3	37	117	4	6	70	173	2	3	2	5	1	1	14	23	3	3
FT/PT	153	95.0%	12	7.3%	99	80.5%	24	19.5%	162	96.4%	6	3.6%	154	93.9%	10	4.0%	243	98.0%	5	2.0%	7	77.8%	2	22.2%	37	86.0%	6	14.0%
M/F	113	68.5%	52	31.5%	64	52.0%	59	48.0%	66	39.3%	102	60.7%	41	25.0%	123	75.0%	72	29.0%	176	71.0%	3	33.3%	6	66.7%	17	39.5%	26	60.5%

CLASS	ALL SCHOOL			
	FT	PT	M	F
FR	191	4	78	117
SO	177	5	69	113
JR	228	8	100	136
SR	238	33	118	153
SP	21	15	11	25
GR				
TOTAL	855	65	376	544
	92.9%	7.1%	40.9%	59.1%
	920		920	

FIRST TIME		TRANSFER		REAPPS		RETURNEES		TOTAL		TOTAL	
M	F	M	F	M	F	M	F	M	F		
3	3	7	10		3	68	101	78	117	195	21.2%
	1	6	1	3	1	60	110	69	113	182	19.8%
		6	3	4	4	90	129	100	136	236	25.7%
				10	4	108	149	118	153	271	29.5%
1	1	2	2		4	8	18	11	25	36	3.9%
								0	0	0	0.0%
4	5	21	16	17	16	334	507	376	544	920	
9		37		33		841		40.9%	59.1%		
1.0%		4.0%		3.6%		91.4%					

KEY
M = MALE
F = FEMALE
FR = FRESHMEN
SO = SOPHOMORES
JR = JUNIORS
SR = SENIORS
DDL = Division of Distributed Learning
GR = GRADUATE PROGRAMS (MA)
FT = FULL-TIME
PT = PART-TIME
FTE = FULL-TIME EQUIVALENCE

DIVISION	FT/M	FT/F	PT/M	PT/F	TOTAL	
SCHOOL OF MINISTRY	105	48	8	4	165	17.9%
DISTRIBUTED LRNG	52	47	12	12	123	13.4%
HUMANITIES	63	99	3	3	168	18.3%
EDUCATION	37	117	4	6	164	17.8%
NAT & SOC SCIENCES	70	173	2	3	248	27.0%
ASSOCIATE IN ARTS	2	5	1	1	9	1.0%
UNDECLARED	14	23	3	3	43	4.7%
GRADUATE					0	0.0%
TOTAL	343	512	33	32	920	
	92.9%		7.1%			

HEADCOUNT	TRADITIONAL	DDL	GR	TOTAL
FT TOTAL	756	99	43	898
PT TOTAL	41	24	3	68
TOTAL	797	123	46	966
	82.5%	12.7%	4.8%	

FTE / HEADCOUNT	
TRADITIONAL	97.6%
DDL	88.9%
GR	99.3%
TOTAL	96.6%

FTE	TRADITIONAL	DDL	GR	TOTAL
PT HOURS	264	124	24	412
PT FTE	22.0	10.3	2.7	35.0
FT FTE	756.0	99.0	43.0	898.0
TOTAL FTE	778.0	109.3	45.7	933.0
	83.4%	11.7%	4.9%	

2003 Spring 2003 (Report by Program)

Traditional Students

CLASS	SCHOOL OF MINISTRY				DIVISION OF HUMANITIES				DIVISION OF EDUCATION				DIVISION OF NATURAL AND SOCIAL SCIENCES				ASSOCIATE IN ARTS				UNDECLARED			
	FT M	FT F	PT M	PT F	FT M	FT F	PT M	PT F	FT M	FT F	PT M	PT F	FT M	FT F	PT M	PT F	FT M	FT F	PT M	PT F	FT M	FT F	PT M	PT F
FR	18	14			14	19			5	16			19	47			2	2			11	13		1
SO	29	4	2	1	12	26			6	27			12	37		1		3			2	10		
JR	28	13		1	23	25			8	30			14	42		1			1	1				
SR	29	17	5	2	14	28	3	2	14	30	3	1	25	46	2	1								
SP	1		1			1		1	4	14	1	5		1								3	2	
TOTAL	105	48	8	4	63	99	3	3	37	117	4	6	70	173	2	3	2	5	1	1	14	23	3	3
FT/PT	153	95.0%	12	7.3%	162	96.4%	6	3.6%	154	93.9%	10	4.0%	243	98.0%	5	2.0%	7	77.8%	2	22.2%	37	86.0%	6	14.0%
M/F	113	68.5%	52	31.5%	66	39.3%	102	60.7%	41	25.0%	123	75.0%	72	29.0%	176	71.0%	3	33.3%	6	66.7%	17	39.5%	26	60.5%

797

Traditional Students

CLASS	TRADITIONAL			
	FT	PT	M	F
FR	180	1	69	112
SO	168	4	63	109
JR	184	4	75	113
SR	203	19	95	127
SP	21	13	10	24
GR				
TOTAL	756	41	312	485
	94.9%	5.1%	39.1%	60.9%

797 797

Traditional Students

TRADITIONAL										
FIRST TIME		TRANSFER		REAPPS		RETURNEES		TOTAL		
M	F	M	F	M	F	M	F	M	F	TOTAL
3	3	6	8		2	60	99	69	112	181
	1	4		3	1	56	107	63	109	172
		5	3	3	3	67	107	75	113	188
				3	1	92	126	95	127	222
1		1	2		4	8	18	10	24	34
								0	0	0
4	4	16	13	9	11	283	457	312	485	797
8		29		20		740		39.1%		60.9%
1.0%		3.6%		2.5%		92.8%				

Graduate Students

MASTERS OF ARTS										
TRANSFER		REAPPS		RETURNEES		TOTAL				
M	F	M	F	M	F	M	F	TOTAL		
						0	0	0		
						0	0	0		
						0	0	0		
						0	0	0		
						0	0	0		
2	4		1	8	31	10	36	46		
2	4	0	1	8	31	10	36	46		
6		1		39		1.3%		4.5%		
0.8%		0.1%		4.9%						

Traditional Students

DIVISION (Traditional Students)	FT/M	FT/F	PT/M	PT/F	TOTAL	
SCHOOL OF MINISTRY	105	48	8	4	165	20.7%
HUMANITIES	63	99	3	3	168	21.1%
EDUCATION	37	117	4	6	164	20.6%
NAT & SOC SCIENCE	70	173	2	3	248	31.1%
ASSOCIATE IN ARTS	2	5	1	1	9	1.1%
UNDECLARED	14	23	3	3	43	5.4%
TOTAL	291	465	21	20	797	
	94.9%		5.1%			

Division of Distributed Learning Students

CLASS	TOTAL ENROLLMENT				FIRST TIME		TRANSFER		REAPPS		RETURNEES		TOTAL		
	FT M	FT F	PT M	PT F	M	F	M	F	M	F	M	F	M	F	TOTAL
FR	8	3	1	2			1	2		1	8	2	9	5	14
SO	5	4	1				2	1			4	3	6	4	10
JR	23	21	2	2			1		1	1	23	22	25	23	48
SR	16	19	7	7					7	3	16	23	23	26	49
SP			1	1			1	1					1	1	2
TOTAL	52	47	12	12	0	1	5	3	8	5	51	50	64	59	123
FT/PT	99	80.5%	24	19.5%	1		8		13		101		52.0%	48.0%	
M/F	64	52.0%	59	48.0%	0.8%		6.5%		10.6%		82.1%				

All Students

HEADCOUNT	TRADITIONAL	DDL	GR	TOTAL
FT TOTAL	756	99	43	898
PT TOTAL	41	24	3	68
TOTAL	797	123	46	966
	82.5%	12.7%	4.8%	

FTE	TRADITIONAL	DDL	GR	TOTAL
PT HOURS	264	124	24	412
PT FTE	22.0	10.3	2.7	35.0
FT FTE	756.0	99.0	43.0	898.0
TOTAL FTE	778.0	109.3	45.7	933.0
	83.4%	11.7%	4.9%	

FTE / HEADCOUNT	
TRADITIONAL	97.6%
DDL	88.9%
GR	99.3%
TOTAL	96.6%

KEY
GR = GRADUATE LEVEL
M = MALE
F = FEMALE
FR = FRESHMEN
SO = SOPHOMORES
JR = JUNIOR
SR = SENIOR
FT = FULL-TIME
PT = PART-TIME
FTE = FULL-TIME EQUIVALENCE

Division of Distributed Learning Cohort Groups Represented			
11M01	18	SM02	15
11T01	13	FA Bridge	31
T11M01	12	10M02	3
3R02	20	10T02	1
T4T02	9	T10R02	1
total 123			

Northwest College
Enrollment Analysis - Spring 2002 to Spring 2003

2003

TRADITIONAL STUDENTS

	2003	2002	<i>2002-2003 Change</i>
FR	181	196	-7.65%
SO	172	193	-10.88%
JR	188	205	-8.29%
SR	222	172	29.07%
SPEC	34	20	70.00%
TOTAL	797	786	1.40%

FT	756	756	0.00%
PT	41	30	36.67%
FT-Equivalent	778	771.6	0.83%

Men	312	307	1.63%
Women	485	479	1.25%
	797	786	1.40%

DIVISION OF DISTRIBUTED LEARNING

	2003	2002	<i>2002-2003 Change</i>
	14	22	-36.36%
	10	10	0.00%
	48	22	118.18%
	49	52	-5.77%
	2	0	
TOTAL	123	106	16.04%

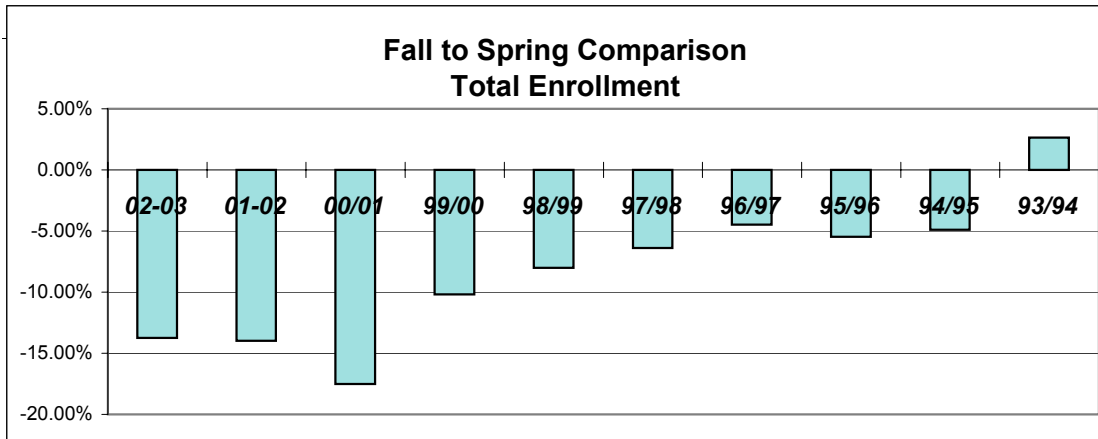
	99	89	11.24%
	24	17	41.18%
	109.3	98.6	10.85%

	64	44	45.45%
	59	62	-4.84%
	123	106	16.04%

Ten-Year Enrollment Comparison 2003

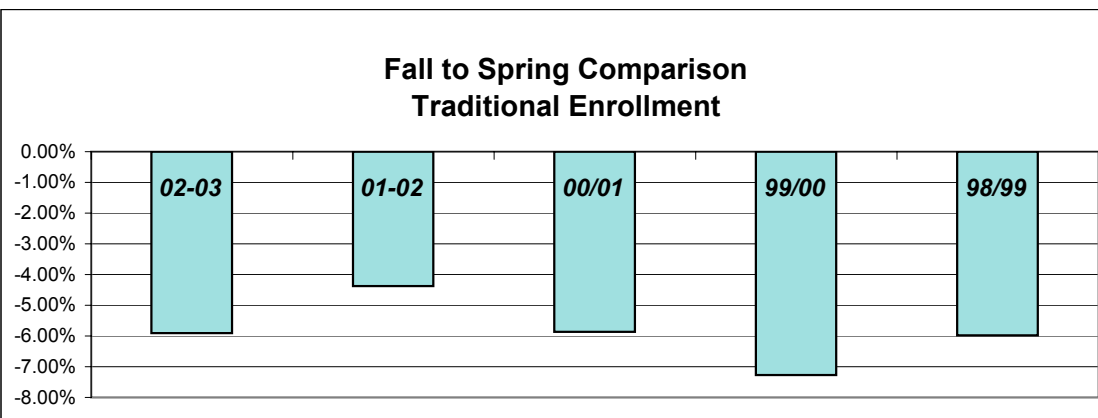
TOTAL ENROLLMENT (includes LEAP)

Academic Year	Fall Semester	Spring Semester	Fall to Spring Change	Percentage Change
<i>02-03</i>	1120	966	-154	-13.75%
<i>01-02</i>	1066	917	-149	-13.98%
<i>00/01</i>	1039	857	-182	-17.52%
<i>99/00</i>	972	873	-99	-10.19%
<i>98/99</i>	848	780	-68	-8.02%
<i>97/98</i>	861	806	-55	-6.39%
<i>96/97</i>	802	766	-36	-4.49%
<i>95/96</i>	824	779	-45	-5.46%
<i>94/95</i>	839	798	-41	-4.89%
<i>93/94</i>	757	777	20	2.64%



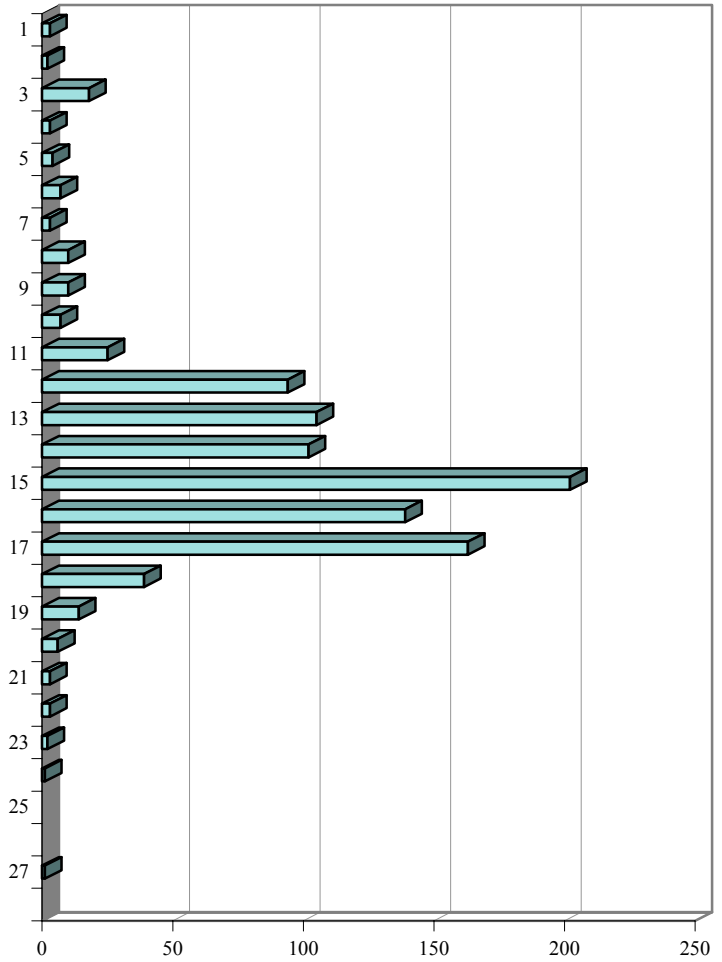
TRADITIONAL ENROLLMENT (excludes LEAP & MA)

Academic Year	Fall Semester	Spring Semester	Fall to Spring Change	Percentage Change
<i>02-03</i>	847	797	-50	-5.90%
<i>01-02</i>	822	786	-36	-4.38%
<i>00/01</i>	819	771	-48	-5.86%
<i>99/00</i>	811	752	-59	-7.27%
<i>98/99</i>	719	676	-43	-5.98%



**2003
Spring 2003**

# Credits	# Students	Total Credit Hours
1	3	3
2	2	4
3	18	54
4	3	12
5	4	20
6	7	42
7	3	21
8	10	80
9	10	90
10	7	70
11	25	275
12	94	1128
13	105	1365
14	102	1428
15	202	3030
16	139	2224
17	163	2771
18	39	702
19	14	266
20	6	120
21	3	63
22	3	66
23	2	46
24	1	24
25		0
26		0
27	1	27
28		0

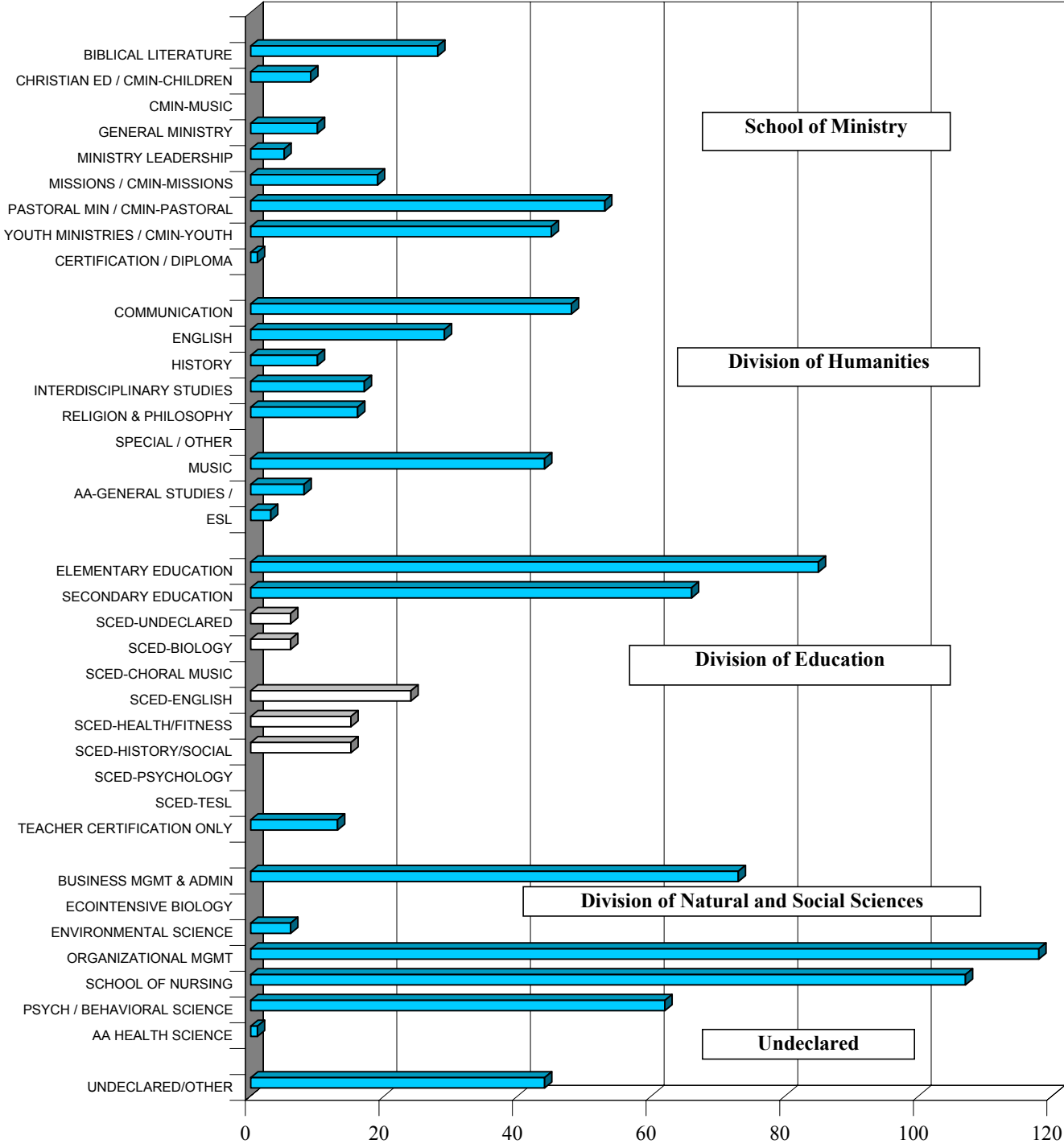


Total 966 13931

Number of Students

Class	Total Credits	2003 Students	Average Credits	Average Credits		
				2002	2001	2000
Freshmen	2864	195	14.7	14.5	14.7	14.6
Sophomores	2703	182	14.9	15.0	15.0	15.1
Juniors	3579	236	15.2	15.4	15.3	15.4
Seniors	3898	271	14.4	14.6	14.6	14.5
Specials	376	36	10.4	11.0	12.1	11.2
Graduate	511	46	11.1	12.2		
All School	13931	966	14.4	14.7	14.8	14.8

Enrollment by Major



Northwest College

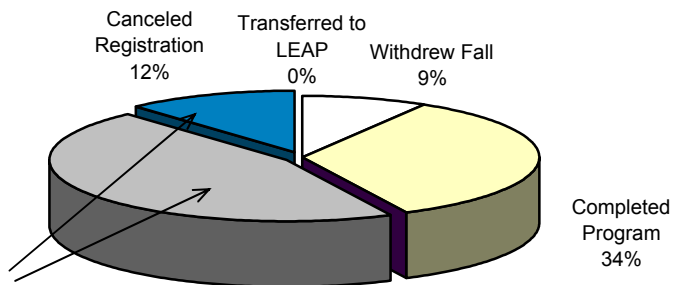
Fall to Spring Traditional Student Retention

2003

(Fall 99 total enrollment to Spr 00 continuing students)

Fall 99 (811) - Spring 00 (682) = 129

Fall to Spring Categories



Non-Returnees

Transferred to LEAP	0
Withdrew Fall	9
Completed Program	35

Non-Registers:

Did Not Register	47
Canceled Registration	12
Total	103

Non-Registers & Cancellations Reasons:

Finances	18
Transferred to another college	4
Personal reasons	7
Misc (health, military, etc.)	3
Employment	2
No reason given	17
NC Staff	3
Family responsibilities	2
Academics or grades	5
Marriage	0
<i>total</i>	61

Non-Registers: Reasons for Not Returning

